



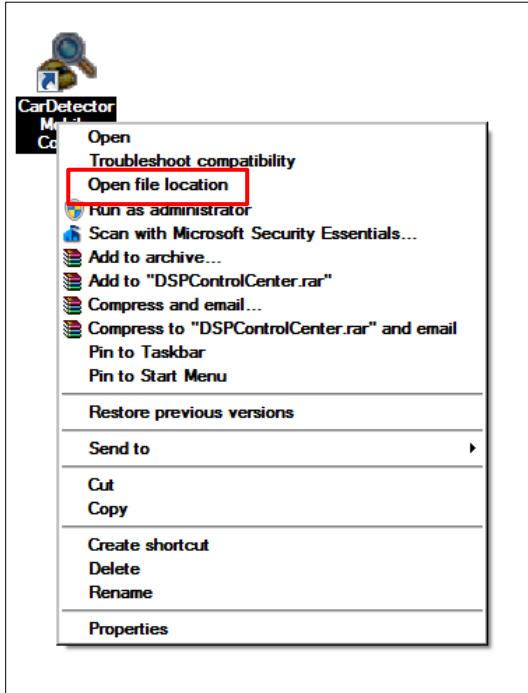
**Quick Start Guide**

**Utilizing the**

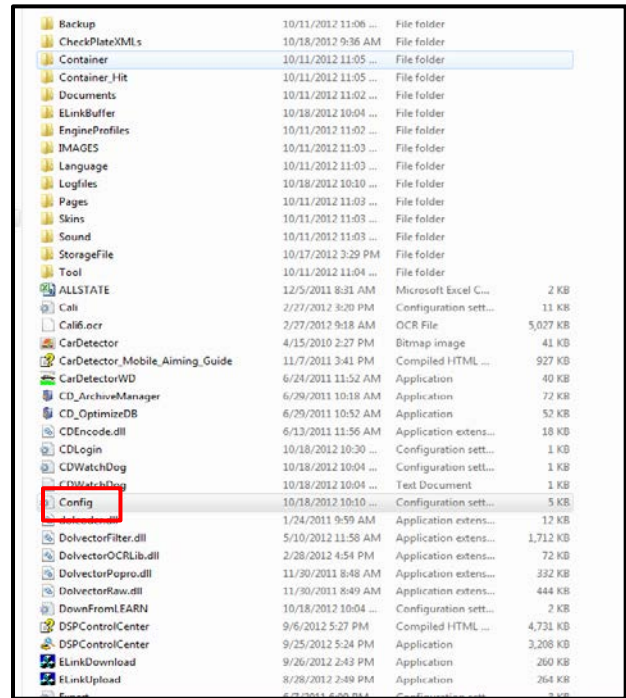
**Check Plate Feature**

**Car Detector Mobile 5.1.1.46**

## Step 1: Enabling the “Check Plate” Feature



- 1 Right Click on the Car Detector Mobile icon  
And Click on “Properties”.



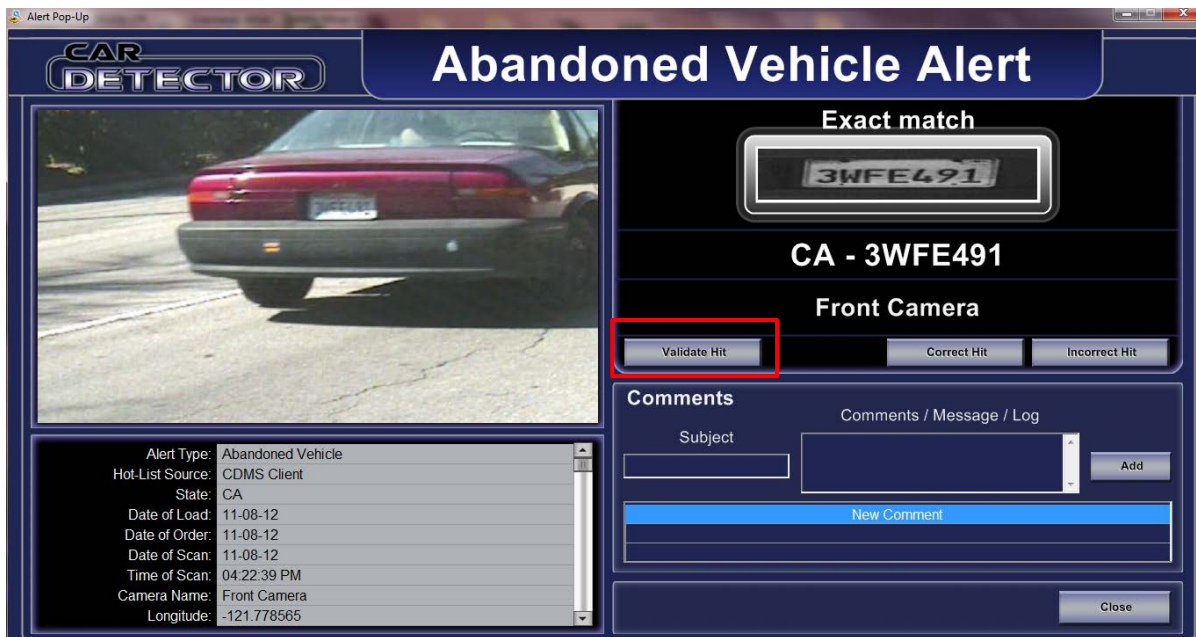
- 2 Locate the “Config.ini,” right click the file  
and open it with notepad.

```
[CheckPlateButton]
Enable=1 ←
OutputFolder=CheckPlateXMLs
MaxFileToKeep=500
[MobileHitHunter]
DataToDisplay=0
DetectionVolume=500
HitHistory=10
CheckMyLocation=1
CheckTargetScope=1
CheckPlayAudio=1
CheckHotListState=1
TimeRefreshSimu=2
```

- 3 In the text file, locate the section labeled  
“CheckPlateButton” and change the  
“Enable” string to “1” as shown on the left



## Step 2: Using “Check Plate” function in Car Detector Mobile Application

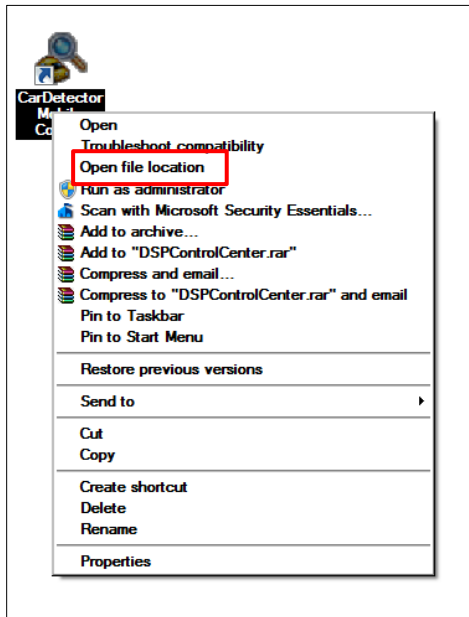


Enabling the check plate feature causes the “**Validate Hit**” button to appear in the Hit Alert Window

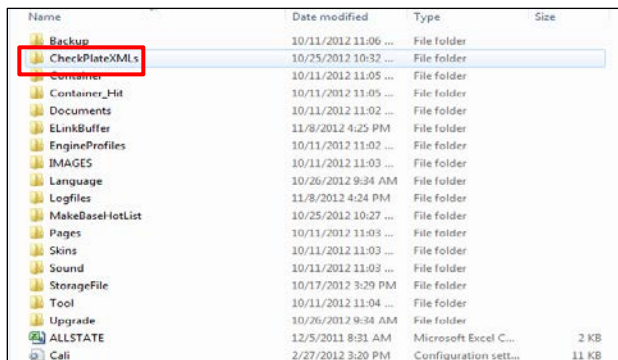
Name	Date modified	Type	Size
Backup	10/11/2012 11:06 ...	File folder	
<b>CheckPlateXMLs</b>	10/25/2012 10:32 ...	File folder	
Container	10/11/2012 11:05 ...	File folder	
Container_Hit	10/11/2012 11:05 ...	File folder	
Documents	10/11/2012 11:02 ...	File folder	
ELinkBuffer	11/8/2012 4:25 PM	File folder	
EngineProfiles	10/11/2012 11:02 ...	File folder	
IMAGES	10/11/2012 11:03 ...	File folder	
Language	10/26/2012 9:34 AM	File folder	
Logfiles	11/8/2012 4:24 PM	File folder	
MakeBaseHotList	10/25/2012 10:27 ...	File folder	
Pages	10/11/2012 11:03 ...	File folder	
Skins	10/11/2012 11:03 ...	File folder	
Sound	10/11/2012 11:03 ...	File folder	
StorageFile	10/17/2012 3:29 PM	File folder	
Tool	10/11/2012 11:04 ...	File folder	
Upgrade	10/26/2012 9:34 AM	File folder	
ALLSTATE	12/5/2011 8:31 AM	Microsoft Excel C...	2 KB
Cali	2/27/2012 3:20 PM	Configuration sett...	11 KB

Clicking “**Validate Hit**” will produce an XML file containing information about the ‘Hit’ in a separate folder shown above

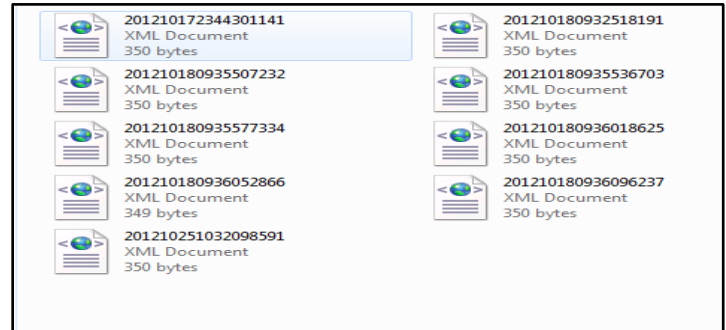
## Step 3: How to use 'Hit' file created from 'Validate Hit'



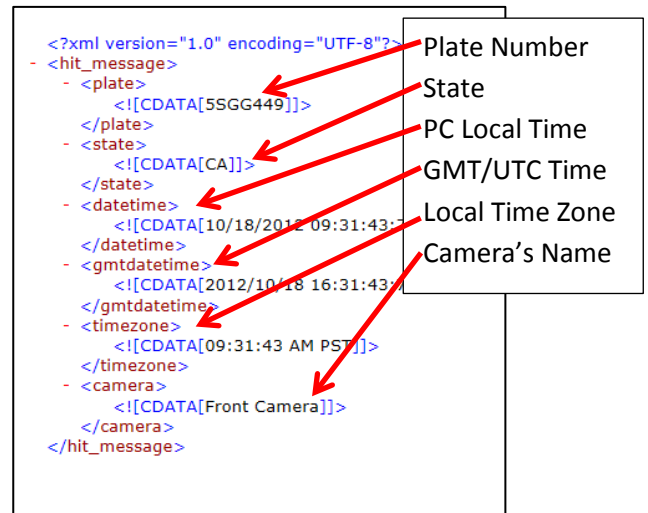
- 1 Locate the Car Detector directory as we did in first Step by right clicking the CarDetector icon and clicking **"Open File Location."**



- 2 Locate **"CheckPlateXMLs"** directory and open it.



- 3 Opening the directory should give you a view containing several files as shown above.



- 4 Open the specific XML and verify information as shown above.

For more Information, please contact Vigilant Solutions Support Team:

[Support@vigilantsolutions.com](mailto:Support@vigilantsolutions.com)

925-398-2079